

# PiNBAC

Harvard Program in Neuroscience  
Post-Baccalaureate Program



**Tari Tan, Bob Datta, and Chloe Denelsbeck**  
February 7, 2024

# Meet the Team



**Bob Datta**

Co-Director



**Tari Tan**

Co-Director



**Chloe Denelsbeck**

Program Coordinator

# Agenda

Our plan for today!

Program Overview

Eligibility

Mentoring

Professional Development

Application

Student Panel

Questions

# Program Goal

Develop a diverse neuroscience workforce by providing a training program to prepare trainees to successfully apply to (and be successful in) PhD programs.



2023 Cohort



# What is *Pi*NBAC?

Two  
Year

Paid

for  
College  
Graduates  
*planning to  
pursue a PhD*

The program primarily consists of laboratory research in a Harvard neuroscience lab with additional professional development and mentorship

# How does it work?



RA

You will be hired and paid as a Research Assistant in a lab

---

And will participate in the additional components of the PiNBAC program as a Harvard employee



FYI

This is not a coursework-based program

---

You will not receive a Harvard transcript or degree, though you can attend/audit courses beyond the PiNBAC curriculum

# Who is eligible?

Please don't hesitate to reach out to Chloe at [chloe\\_denelsbeck@hms.harvard.edu](mailto:chloe_denelsbeck@hms.harvard.edu) if you have any questions or are unsure of your eligibility!

## Our program requires that applicants:

- Plan to pursue a PhD in Neuroscience (not MD or MD/PhD)
- Be documented US Citizens and/or Permanent Residents
- Have completed (or will complete) their bachelor's at a non-research intensive school
- Not hold any graduate level degrees (Master's Degree or PhD)
- Demonstrate interest in neuroscience research (for example, through coursework or previous research experience)
- Have completed their bachelor's no more than three years before the start of the program

**We especially encourage applications from: Students belonging to populations underrepresented in neuroscience, as defined by the NIH**



Scan here to learn more about PiNBAC eligibility

# What is a research intensive institution?

- Primarily, this applies to schools that have a PhD program in Neuroscience or a related biomedical field.
- This will also usually correspond to being designated as an R1 or R2 or described as “High doctoral research” or “Very high doctoral research” institution according to the Carnegie Classification of Institution of Higher Education.

The screenshot shows the Carnegie Classification of Institutions of Higher Education website for Harvard University. The page displays the university's name, location (Cambridge, MA), year or above (4), type (Private not-for-profit), and student count (30,391). Below this, there is a search section with a red circle highlighting the 'BASIC' classification, which is described as 'Doctoral Universities: Very High Research Activity'. Other classifications include 'COMMUNITY ENGAGEMENT' (Not Classified), 'UNDERGRADUATE INSTRUCTIONAL PROGRAM' (Arts & Sciences Focus, High Graduate Coexistence), 'GRADUATE INSTRUCTIONAL PROGRAM' (Research Doctoral: Comprehensive Programs: With Medical/Veterinary School), 'ENROLLMENT PROFILE' (Majority Graduate), and 'UNDERGRADUATE PROFILE' (Four-Year, Full-Time, More Selective, Lower Transfer-In).

# Alternatives to PiNBAC

**For those who graduated from a research intensive institution and/or hold an advanced degree:**

---

- **Research Assistant positions**
  - The “Internal” application mechanism – through this mechanism you secure a two-year RA position on your own in a Harvard or Harvard-affiliated Neuro lab and then apply to PiNBAC
- **The Harvard Research Scholar Initiative** which has a natural sciences track
- **The Kempner Institute’s** new post-baccalaureate program

**For international students:**

---

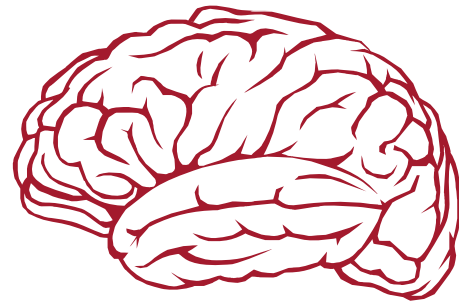
- **Research Assistant positions**
  - The “Internal” application mechanism – through this mechanism you secure a two-year RA position on your own in a Harvard or Harvard-affiliated Neuro lab and then apply to PiNBAC

# What does a competitive applicant look like?

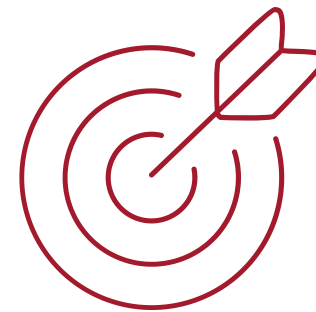
Some attributes we are particularly looking for include...



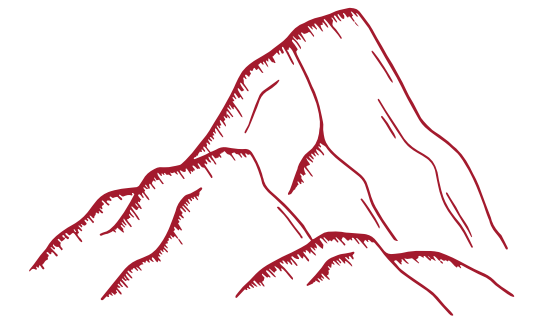
**Self-driven**  
learners



Demonstrated **interest**  
in **Neuroscience**



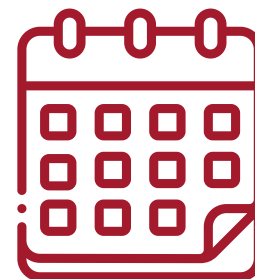
**Commitment** to  
PiNBAC **mission**



Demonstrated  
**grit** and  
**perseverance**



Desire to  
pursue a **PhD** in  
**Neuroscience**



Academic and career  
**goals** are **aligned** with  
PiNBAC programming



**Curiosity** and  
**drive** to study  
Neuroscience



# Mentorship & Professional Development



## Monthly Professional Development Workshops

---

- Opportunities to **meet other RAs at Harvard**
- **Topics Include:** Talking about your science, letters of recommendation, writing about your science, graduate school interviews, the neuroscience PhD landscape, careers in neuroscience, and choosing a PhD program that is right for you.



## Weekly PiNBAC Course

---

- The weekly course covers a **wide range of topics** from experience in the lab, science identity, professional development, journal club, and more.



## Mentorship Opportunities

---

- When PiNBAC trainees join a lab, their PI takes on the role of **research mentor**.
- Once in the lab, trainees are often assigned an **"in-lab" mentor** who will provide guidance and support in the lab.
- In addition, each PiNBAC trainee is assigned a **mentoring pod**, comprised of a faculty mentor and graduate student mentor.



# Past Students

Have matriculated to their top Neuroscience PhD Programs



**NYU**

**UT Southwestern**  
Medical Center



**HARVARD**  
UNIVERSITY

**UCSF**

University of California  
San Francisco

**Yale**



# Ongoing Programming



## Department Events

---

Happy Hour, Pizza Talks, Lunch Day, Tea Time, Listening Lab, Department Retreat, and more!



## Monthly Lunches

---

With PiNBAC Directors



## PiN Nocturnal Journal Club

---

With PiNBAC Directors and learning reflections



## Weekly Seminars/Events

---

Harvard neuroscience community (e.g., events with Underrepresented Scholars in Neuroscience (USN))



# Application Components



Unofficial transcripts from  
undergraduate institutions

---

Completion of bachelors by  
July 2024 and no earlier than  
July 2021



At least one Letter of  
Recommendation

---

- Up to three letters will be accepted
- Once you submit your PiNBAC application, your letter writer will receive an email with the secure portal to upload the letter



Resume/CV

---



Three Short Essays

---

500 words maximum and  
the essay prompts are  
listed on the website

# Key Dates

Dec 1,  
2023

March 1,  
2024

March 15,  
2024

May  
2024

July  
2024



Application  
Opens



Application  
Due



Letters of  
Recommendation Due

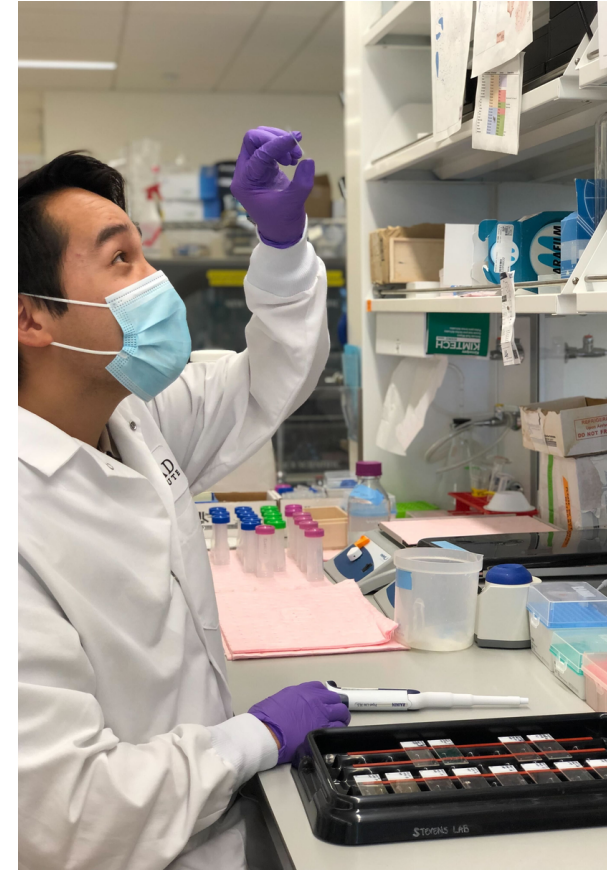
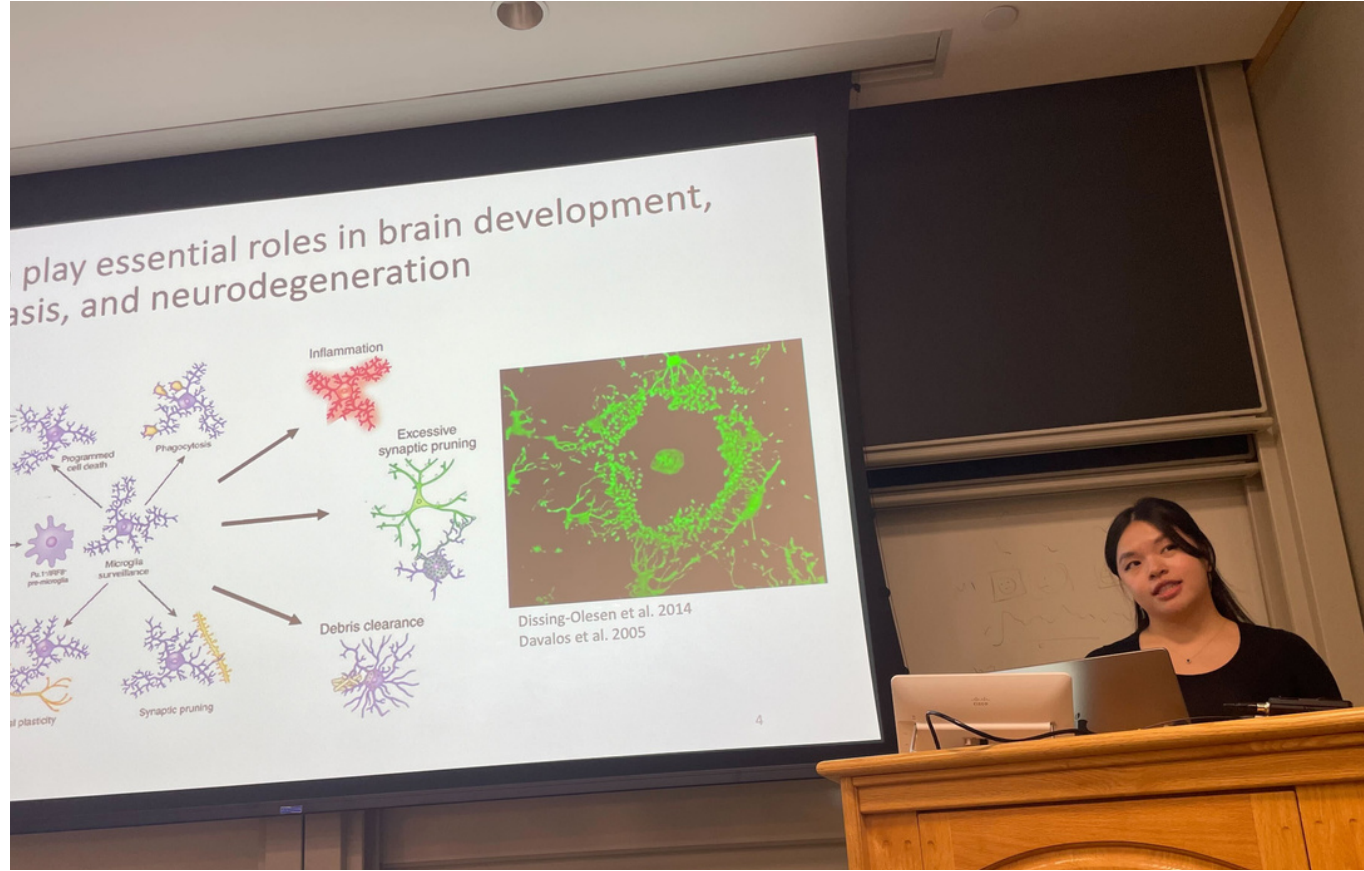
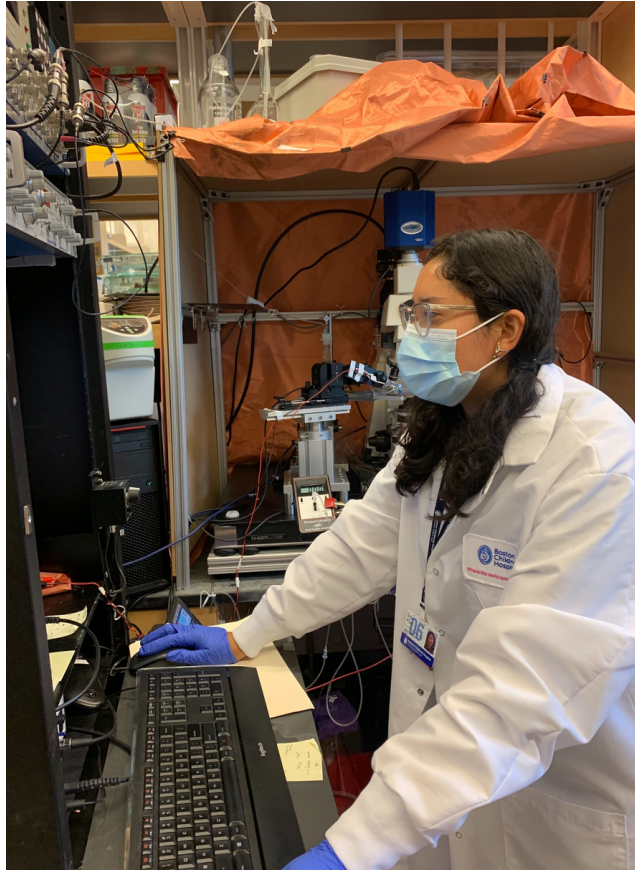


Decisions  
Sent



Program  
Begins





**Apply Here** →  
Apps close March 1, 2024 at 11:59PM

[www.pinbac.org/apply](http://www.pinbac.org/apply)



# Sign Up for the PiNBAC Email List

Stay up to date on information  
sessions and application information



# Thank you!

Don't hesitate to reach out with additional questions!



**Bob Datta**

[srdatta@hms.harvard.edu](mailto:srdatta@hms.harvard.edu)



**Tari Tan**

[taralyn\\_tan@hms.harvard.edu](mailto:taralyn_tan@hms.harvard.edu)



**Chloe Denelsbeck**

[chloe\\_denelsbeck@hms.harvard.edu](mailto:chloe_denelsbeck@hms.harvard.edu)



# Meet *Current* Trainees



Daria Paulis

Navarro Lab



Kayla Anthis

Datta Lab